

# CABLE ACCESSORIES

## PVC Cable Duts



Size H (mm) x W (mm)	Available in type	
	P-2 BROAD TEETH	P3- NARROW TEETH
15x15	Yes	No
25x25	Yes	No
30x25	Yes	Yes
45x25	Yes	Yes
45x45	Yes	Yes
45x60	Yes	No
60x25	Yes	Yes
60x45	Yes	Yes
60x60	Yes	Yes
75x25	Yes	No
75x45	Yes	No
75x60	Yes	No
75x75	Yes	No
80x45	No	Yes
80x80	Yes	Yes
100x100	Yes	No
150x150	Yes	No

## PVC Channels

Size In mm Height X Width	Per Box (Pcs.)		
	Slotted (1Meter)	Slotted (2Meter)	Blank (2Meter)
25 x 25	110	100	100
30 x 25	120	100	100
45 x 25	80	80	80
45 x 45	70	50	50
45 x 60	50	50	50
60 x 25	80	80	50
60 x 45	45	45	45
60 x 60	40	40	40
80 x 25	45	45	45
80 x 45	35	35	35
80 x 60	30	30	30
80 x 80	24	24	24
100 x 100	18	18	18

SS-1 : THIN SLOT	SS-2 STANDARD SLOT	SS-3 CLOSE TOP SLOT
Slot Distance: 5mm	Slot Distance: 8mm	Slot Distance: 8mm
Distance Between Slot : 8mm	Distance Between Slot : 12mm	Distance Between Slot : 8mm

# CABLE ACCESSORIES

## Heat Shrinkable Sleeve



DIMENSIONS					
SIZE		AS SUPPLIED	AFTER RECOVERY		STANDARD PACKAGE
INCH	MM	INTERNAL DIAMETER-MM	INTERNAL DIAMETER MAX- $\mu$ m	WALL THICKNESS NOM-mm	SPOOL LENGTH M/Spool
3/64	0.8	1.180.2	0.5	0.22	200
1/16	1	1.580.2	0.65	0.28	200
	1.5	2.080.2	0.85	0.32	200
3/32	2	2.580.2	1	0.35	200
	2.5	3.080.2	1.3	0.38	200
1/8	3	3.580.2	1.5	0.4	200
	3.5	4.080.2	1.8	0.42	200
	4	4.580.2	2	0.45	200
3/16	4.5	5.080.2	2.3	0.5	200
	5	5.580.2	2.5	0.55	100
1/4	6	6.580.2	3	0.55	100
5/16	7	7.580.3	3.5	0.55	100
	8	8.580.3	4	0.6	100
3/8	9	9.580.3	4.5	0.6	100
	10	10.580.3	5	0.6	100
	11	11.580.3	5.5	0.6	100
1/2	12	12.580.3	6	0.6	100
	13	13.580.3	6.5	0.65	100
	14	14.580.3	7	0.65	100
5/8	15	15.580.4	7.5	0.7	100
	16	16.580.4	8	0.7	100
	17	17.580.4	8.5	0.7	100
3/4	18	19.080.5	9	0.8	100
	20	21.080.5	10	0.8	100
	22	23.080.5	11	0.8	100
1	25	26.080.5	12.5	0.9	50
	28	29.080.5	14	0.9	50
1 1/4	30	31.581.0	15	0.95	50
	35	36.581.0	17.5	1	50
1 1/2	40	41.581.0	20	1	50
	45	46.581.0	22.5	1	25
2	50	50	25	1	25
	60	60	31	1.3	25
	70	70	36	1.3	25
3	80	80	41	1.46	25
	90	90	46	1.46	25
4	100	100	51	1.46	25
	120	120	61	1.56	25
5	150	150	76	1.56	25
6	150	150	76	1.56	25
7	180	180	91	1.56	25

## Spiral Sleeves

Outer Diameter (inches)	Outer Diameter (mm)	Maximum	Pitch (mm)	Packing
1/8"	3.00	10	5.00	50 mtrs.
1/4"	6.40	15	10.00	50 mtrs.
3/8"	9.50	20	11.50	25 mtrs.
1/2"	12.70	25	15.00	25 mtrs.
5/8"	15.90	30	17.00	25 mtrs.
3/4"	19.00	40	19.00	25 mtrs.
1"	25.40	60	25.00	25 mtrs.
1.1/4"	31.75	80	31.00	25 mtrs.
1.1/2"	38.00	100	35.00	10 mtrs.



# CABLE ACCESSORIES

## Bus Bar Sleeves



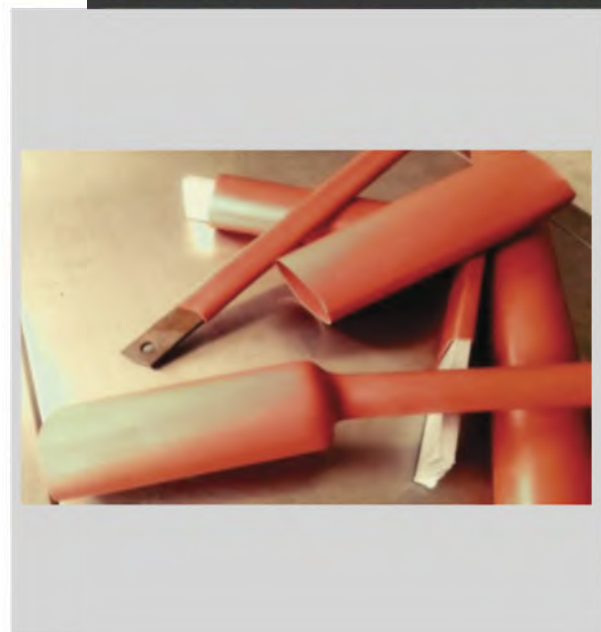
**Material :** PVC (Shrinkable) 200 micron  
**Color :** Black, Green, Yellow, Red, Blue, Grey & Brown

Size	Suitable Bus Bar Size
17mm	6x6, 8x4, 10x3, 9x3mm
20mm	9x6, 12x3mm
25mm	12x6, 15x3mm
30mm	18x6, 20x3mm
35mm	20x6, 25x3mm
41mm	25x6, 25x9mm
48mm	25x12, 30x6, 30x10mm
55mm	38x9, 38x12mm
61mm	40x6, 40x9mm
73mm	50x6mm
81mm	50x10mm, 50x12mm
85mm	60x6, 60x10, 60x12
93mm	75x6
103mm	75x12
110mm	90x12, 90x6
120mm	100x9, 100x6
140mm	100x12
150mm	120x6, 120x10, 125x6
170mm	125x10, 125x12
190mm	150x12, 150x10, 150x6
210mm	175x12, 175x10, 150x6
230mm	200x6
250mm	250x12, 200x10
300mm	250x6, 250x12, 250x10

## Bus Bar Insulation Tubes

ROUND BUSBAR			
Rated Voltage (kV)	Phase-Phase (mm)	Phase-ground (mm)	Air clearance (mm)
11	50	60	110
22	90	120	210
33	140	190	310

RECTANGULAR BUSBAR			
Rated Voltage (kV)	Phase-Phase (mm)	Phase-ground (mm)	Air clearance (mm)
11	60	70	110
22	110	140	210
33	180	260	310



# CABLE ACCESSORIES

## Poly Carbonate Sheets



- High impact strength
- Excellent light transmission
- High / low temperature resistance
- Thermoformable
- Decorative finishes possible

Lexan\* 9030 P

### Light transmission

Transparent Lexan 9030 P sheet have excellent light transmission, dependent of thickness between 82% - 87%

### Fire performance

Lexan\* 9030 P sheet has good fire behavior characteristics. Lexan sheet does not contribute significantly to the spread of fire or to the generation of toxic gases. For details please contact your local sales office.

### Product Availability :-)

Standard gauge in mm: 2mm - 10mm  
 Standard width: 1220mm and 2050mm  
 Standard Color: Clear 112 and Bronze 5109  
 Masking: Upto 3mm thickness Coex PE film and above 3mm thickness adhesive Opal PE film

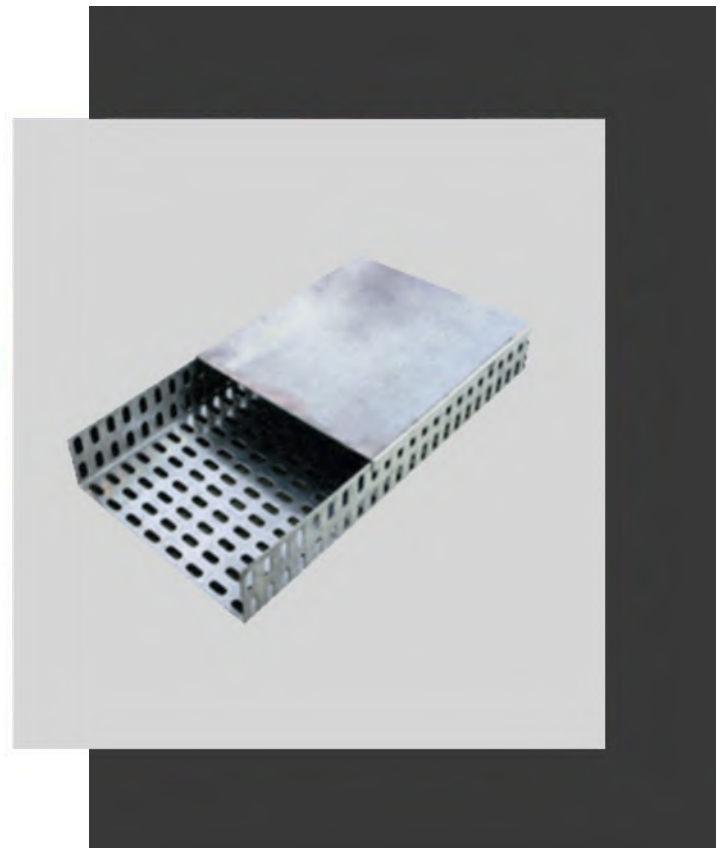
## Perforated cable tray

### Specifications

Sheet Make  
 Make  
 Type  
 Size  
 Standard Length  
 Width  
 Height  
 Mass of Zinc Coating  
 Sheet Thickness  
 I S Grade

### GI Cable Tray

JSW Make  
**ELEK**  
 Perforated Cable Tray  
 As per requirement.  
 2.5mtrs (2500mm).  
 As per requirement  
 50 mm/ 75mm.  
 120gsm  
 2.5 / 2.0 / 1.6 mm  
 BIS277\_ 2003GPL



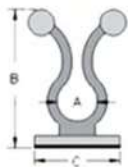
# CABLE ACCESSORIES

## Lader Type Cable Tray



<b>Ladder Type Tray (Welded)</b>		<b>Specifications</b>		<b>MS Cable Tray</b>	
<b>Specifications</b>	<b>GI Cable Tray</b>	<b>Sheet Make</b>	<b>JSW Make</b>	<b>Sheet Make</b>	<b>JSW Make</b>
Sheet Make	JSW Make	Make	ELEK	Make	ELEK
Type	Ladder Cable Tray	Type	Perforated Type	Type	Perforated Type
Size	As per requirement.	Size	As per requirement.	Size	As per requirement.
Standard Length	2.5mtrs (2500mm).	Standard Length	2.5mtrs (2500mm).	Standard Length	2.5mtrs (2500mm).
Width	As per requirement	Width	As per requirement	Width	As per requirement
Height	50 mm/ 75mm.	Height	50 mm/ 75mm.	Height	50 mm/ 75mm.
Mass of Zinc Coating	120gsm	Mass of Coating	60-80 microns for MS	Mass of Coating	60-80 microns for MS
Sheet Thickness	2.5 / 2.0 / 1.6 mm	Sheet Thickness	2.5 / 2.0 / 1.6 mm	Sheet Thickness	2.5 / 2.0 / 1.6 mm
I S Grade	BIS277_2003GPL	I S Grade	BIS277_2003GPL	I S Grade	BIS277_2003GPL
<b>Ladder Type Tray (Bolted)</b>		<b>Hot Dip Galvanized Perforated Cable Trays</b>		<b>Hot Dip Cable Tray</b>	
<b>Specifications</b>	<b>GI Cable Tray</b>	<b>Specifications</b>	<b>Jindal sheet -JSW Make OFCRCA</b>	<b>Hot Dip Cable Tray</b>	
Sheet Make	JSW Make	Sheet Make	(IS226)	Jindal sheet -JSW Make OFCRCA	
Make	ELEK	Make	ELEK	Make	
Type	Ladder Cable Tray(Bolted)	Type	Perforated Cable Tray	Type	
Size	As per requirement.	Size	As per requirement	Size	
Standard Length	2.5mtrs (2500mm).	Standard Length	2.5mtrs (2500mm).	Standard Length	
Width	As per requirement	Width	As per requirement	Width	
Height	50 mm/ 75mm.	Height	50 mm, 75mm	Height	
Mass of Zinc Coating	120gsm	Mass of Hot Dip Coating	65 To 75 Microns	Mass of Hot Dip Coating	
Sheet Thickness	2.5 / 2.0 / 1.6 mm	Sheet Thickness	2 mm	Sheet Thickness	
I S Grade	BIS277_2003GPL	I S Grade	IS 2629/BS 729/ASTM 123	I S Grade	
<b>Ladder Type Cable Tray (Bolted)</b>		<b>GI Race way Cable Trays</b>		<b>GI Cable Tray</b>	
<b>Specifications</b>	<b>MS Cable Tray</b>	<b>Specifications</b>	<b>JSW Make</b>	<b>GI Cable Tray</b>	
Sheet Make	JSW Make	Sheet Make	ELEK	Sheet Make	
Make	ELEK	Make	ELEK	Make	
Type	Ladder Cable Tray (Bolted)	Type	Race way	Type	
Size	As per requirement.	Size	As per requirement.	Size	
Standard Length	2.5mtrs (2500mm).	Standard Length	2.5mtrs (2500mm).	Standard Length	
Width	As per requirement	Width	As per requirement	Width	
Height	50 mm/ 75mm.	Height	50 mm/ 75mm.	Height	
Mass of Coating	60-80 microns for MS	Mass of Zinc Coating	120gsm	Mass of Zinc Coating	
Sheet Thickness	2.5 / 2.0 / 1.6 mm	Sheet Thickness	2.5 / 2.0 / 1.6 mm	Sheet Thickness	
I S Grade	BIS277_2003GPL	I S Grade	BIS277_2003GPL	I S Grade	

## Adhesive Twist Clips



**Material :**  
RoHS compliant Nylon backed with high quality imported adhesive tape.

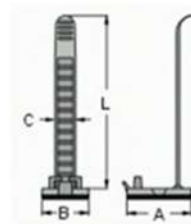
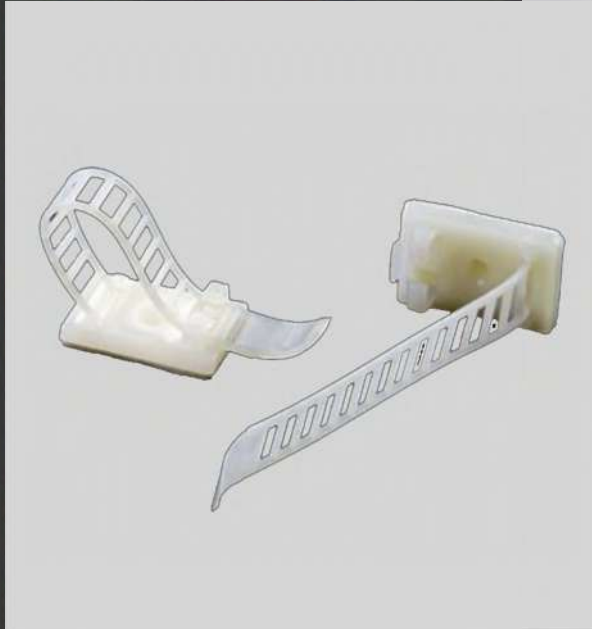
**Colour :**  
Natural

A	B	C	Pkg
11.0 mm	33.0 mm	20.0 mm	100 Pcs
8.8 mm	26.0 mm	17.2 mm	100 Pcs
16.0 mm	33.0 mm	20.0 mm	100 Pcs



# CABLE ACCESSORIES

## Adjustable Clamp(Ladder Type)



**Material :**  
Special Nylon RoHS Compliant

**Colour :**  
Natural

Length	Width	Height	Max Bundle Dia	Pkg
29.0 mm	20.5 mm	12.7 mm	22.0 mm	100 Pcs

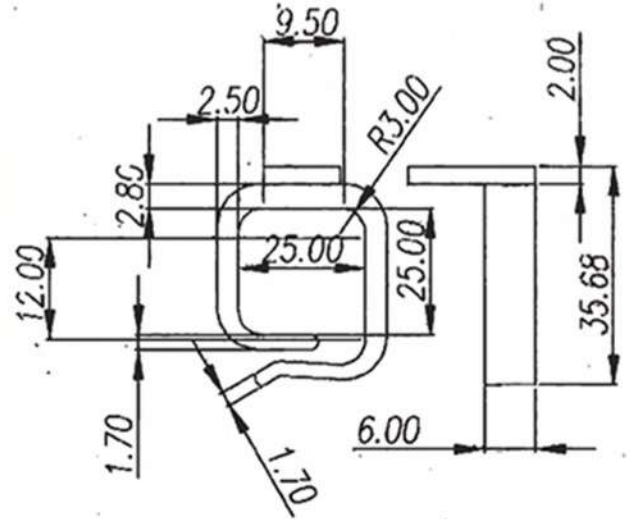
## Self Adhesive Tie Mounts

Length	Width	Pkg
12.5 mm	12.5 mm	100 Pcs
20.0 mm	20.0 mm	100 Pcs
25.0 mm	25.0 mm	100 Pcs
28.0 mm	28.0 mm	100 Pcs
37.0 mm	37.0 mm	100 Pcs



# CABLE ACCESSORIES

## Plastic Cable Loop



## Push Mount Tie

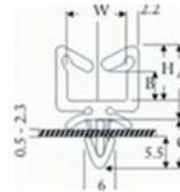
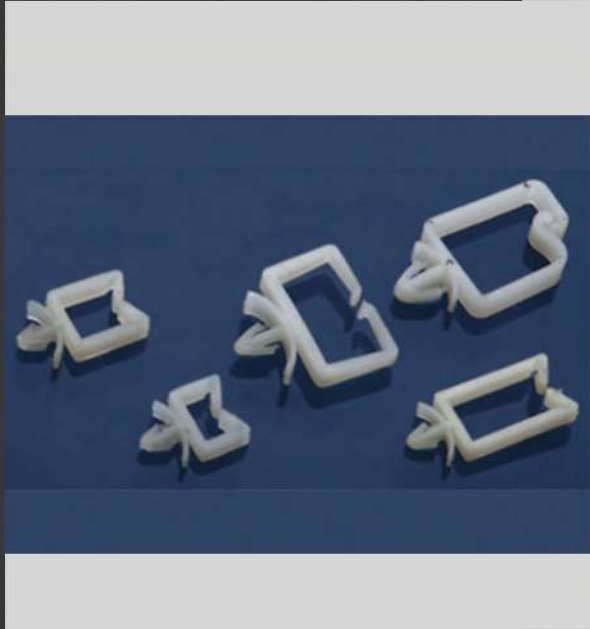


Part No.	Size H X W (mm)	Mounting Method (mm)	For Max. Cable Tie Width "T" (mm)	Suitable For Plate Thickness
TC 7 (P)	20x20.5	Push Mount in 6.4 mm hole Dia	8.0	1.8 - 2.3 mm
TC 9 (P)	25.8x20.5	Push Mount in 9 mm hole Dia	8.0	8 - 11 mm



# CABLE ACCESSORIES

## Push Mount Wire Holder



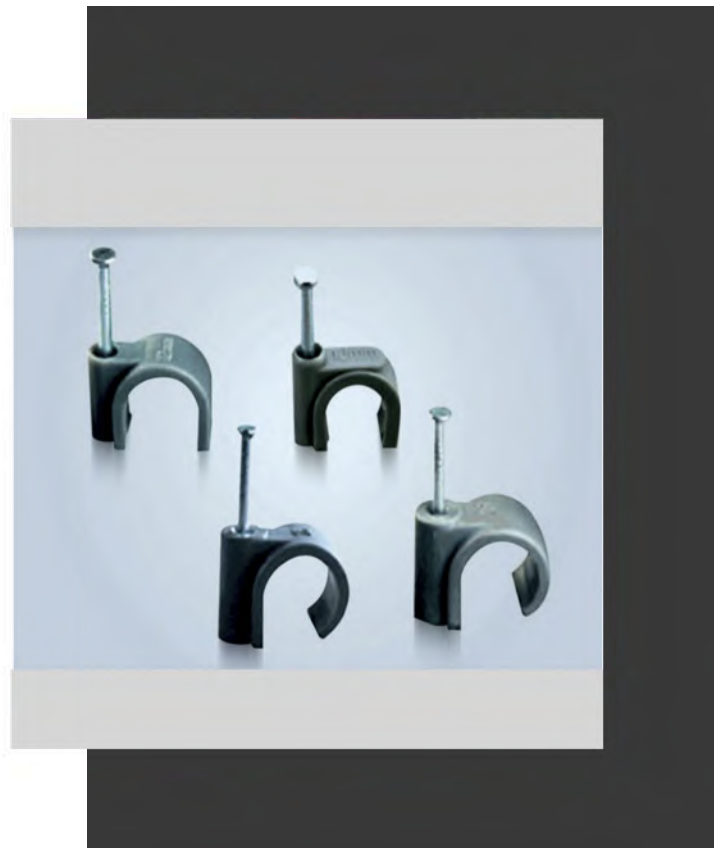
**Standard Colour :** Natural White & Black.  
**Operating Temperature :** -25° C to +85° C.

Part No.	Height H (mm)	Bundle Diameter Range				Hole Dia (mm)	Standard Packing
		A (mm)	B (mm)	C (mm)	W (mm)		
WH 5	9.5	13	5	8.2	11.1	4.8	100 Nos.
WH 10	14.7	18.2	10.2	8.2	11.1	4.8	100 Nos.
WH 19	23.7	27.2	19.2	8.2	11.1	4.8	100 Nos.
WH 27	31.7	35.1	27.1	8.2	11.1	4.8	100 Nos.
WHH 13	15.7	20.2	13.1	12.6	24	4.8	100 Nos.
WHS 20	28.5	31.3	20.5	13.0	20	6.4	100 Nos.

## Circle Nail Cable Clip

**Material :**

Size	H MM	R MM	MM
04 mm	5.3	4	1.7 x 15
05 mm	6.5	5	7.5 x 15
06 mm	8.1	6	1.7 x 17
07 mm	8.7	7	1.8 x 19
08 mm	9.6	8	1.9 x 21
09 mm	10.7	9	2.0 x 22
10 mm	11.7	10	2.05 x 25
12 mm	12.8	12	2.05 x 27
14 mm	14.9	14	2.4 x 32
16 mm	16.9	16	2.5 x 35
18 mm	20.8	18	2.5 x 37
20 mm	23.6	20	2.8 x 42
22 mm	25.0	22	2.8 x 42
25 mm	27.7	25	3.2 x 48
30 mm	33.1	30	3.2 x 53
35 mm	36.6	35	3.2 x 58
40 mm	45.2	40	3.4 x 60





# CABLE ACCESSORIES

## Self Locking Cable Tie



PRODUCT CODE	LENGTH		BUNDLE DIAMETER		MIN LOOP TENSILE		
	INCH	MM	MIN	MAX	LEBS	KGS	NEWTON
<b>SELF LOCKING - STANDARD SIZES</b>							
100X2.5	4	100	5	24	22	10	98.07
150X3.6	6	150	5	35	44	18	176.52
200X3.6	8	200	5	50	44	18	176.52
250X4.8	8	200	5	50	50	23	225.55
200X7.6	8	200	6	50	75	35	343.23
250X4.8	10	250	5	65	50	23	225.55
300X4.8	12	300	5	75	50	23	225.55
300X7.6	12	300	6	75	75	35	343.23
350X4.8	14	350	5	85	50	23	225.55
368X4.8	15	368	5	100	50	23	225.55
380X7.6	15	360	6	102	75	35	343.23
400X4.8	16	400	5	110	50	23	225.55
450X4.8	18	450	5	130	50	23	225.55
450X7.6	18	450	6	130	75	35	343.23
500X7.9	20	500	6	150	75	35	343.23
550X4.8	22	550	5	160	50	23	225.55
550X7.9	22	550	6	160	75	35	343.23
650X9.0	26	650	8	180	90	60	568.4
750X9.0	30	750	8	185	90	60	568.4
920X9.0	36	920	8	270	90	60	568.4
1220X9.0	48	1220	8	305	90	60	568.4
<b>SELF LOCKING - ECONOMY SERIES</b>							
60X2.0	2.5	65	3	10	18	8	78.45
80X2.0	3.2	80	3	18	18	8	78.45
100X2.0	4	100	3	24	18	8	78.45
150X2.5	6	150	5	35	22	10	98.07
200X2.5	8	200	5	50	22	10	98.07
250X2.2	10	250	5	65	26	12	117.68
250X3.6	10	250	5	65	44	18	176.52
300X3.2	12	300	5	75	26	12	117.68
300X3.6	12	300	5	75	44	18	176.52
<b>REUSABLE / RELEASABLE CABLE TIES</b>							
200X4.8	8	200	5	50	50	23	225.55
250X4.8	10	250	5	65	50	23	225.55
368X4.8	15	368	5	100	50	23	225.55
200X7.4	8	200	5	50	75	35	343.23
<b>BEAD TYPE REUSABLE/RELEASABLE CABLE TIES</b>							
200X3.8	8	200	6	50	44	18	176.52

## Stainless Steel Cable Ties

### STANDARD CABLE TIE

Size (MM)	Width (MM)	Size (MM)
100	4.6	100
150	4.6	150
200	4.6	200
250	4.6	250
300	4.6	300
360	4.6	350
450	4.6	450
520	4.6	520
680	4.6	680
840	4.6	840
1000	4.6	1000

### HEAVY DUTY

Size (MM)	Width (MM)	Size (MM)
100	7.9	100
150	7.9	150
200	7.9	200
250	7.9	250
300	7.9	300
350	7.9	350
450	7.9	450
520	7.9	520
680	7.9	680
840	7.9	840
1000	7.9	1000



# CABLE ACCESSORIES

## Flexible Polyamide Conduit



S.No	Size	Inner Diameter	Outer Diameter	Standard Packing
1)	Pg7	6.5 mm	10.0 mm	100 Mtrs
2)	Pg9	10 mm	13.0 mm	100 Mtrs
3)	Pg11	12.0 mm	15.8 mm	50 Mtrs
4)	Pg13.5	14.5 mm	18.5 mm	50 Mtrs
5)	Pg16	16.0 mm	21.2 mm	50 Mtrs
6)	Pg21	21.9 mm	28.5 mm	50 Mtrs
7)	Pg28	27.8 mm	34.5 mm	25 Mtrs
8)	Pg34	36.0 mm	42.5 mm	25 Mtrs
9)	Pg48	48 mm	54.5 mm	25 Mtrs

## PG Glands

PG GLANDS						
S. NO.	MODEL	CABLE Range(mm)	Thread O.D L2(mm)	Thread O.D L1(mm)	Spanner size A& E (mm)	Qty /bag
1	PG-7	3-6.5	12.5	9	18/16	100
2	PG-9	4-8	15.2	9	22/19	100
3	PG-11	5-10	18.6	9	24/22	100
4	PG-13.5	6-11	20.4	10	27/24	100
5	PG-16	10-13	22.5	10	30/27	100
6	PG-19	12-15	24	10	30/28	100
7	PG-21	13-18	28.3	12	35/33	100
8	PG-25	16-21	30	12	37/35	50
9	PG-29	18-25	37	12	45/42	50
10	PG-36	22-32	47	15	58/52	20
11	PG-42	32-38	54	18	62/58	20
12	PG-48	37-44	59.3	18	70/64	20
13	PG-63	42-50	71	30	83/77	10

SNO	MODEL	CABLE Range(mm)	Thread O.D L2(mm)	Thread O.D L1(mm)	Spanner size A& E (mm)	Qty /bag
1	M12	M12*1.5	3-6.5	9	18/16	100
2	M16	M16*1.5	4-8	9	22/19	100
3	M18	M18*1.5	5-10	9	24/22	100
4	M20	M20*1.5	6-11	10	27/24	100
5	M22	M22*1.5	10-13	10	30/27	100
6	M24	M24*1.5	12-15	10	30/28	100
7	M26	M26*1.5	12-15	11	31/28	100
8	M27	M27*1.5	13-18	12	35/33	100
9	M28	M28*1.5	13-18	12	35/33	100
10	M30	M30*1.5	16-21	12	37/35	50
11	M32	M32*1.5	16-21	12	38/35	50
12	M36	M36*1.5	18-25	12	45/42	20
13	M40	M40*1.5	22-32	15	52/52	20
14	M46	M46*1.5	22-32	15	58/52	20
15	M50	M50*1.5	32-38	18	62/58	20
16	M58	M58*1.5	37-44	18	70/64	20
17	M63	M63*1.5	37-44	18	72/64	20



# CABLE ACCESSORIES

## Worm Drive Hose Clamp



HOSE SIZE	JOLLY CLIP SIZE	SIZE AS PER BS 5315/4762	OUTSIDE DIAMETER OF THE HOSE				MOQ
			MM		INCH		
			MIN	MAX	MIN	MAX	
1/4"	000	12	9	12	3/8	1/2	MULTIPLE OF 10 NOS
3/8"	00M	16	12	16	1/2	5/8	
1/2"	00	20	14	20	1/2	3/4	
5/8"	0	22	16	22	5/8	7/8	
3/4"	100S	25	18	25	3/4	1"	
***	0K	30	20	28	3/4	1.1/8	
1"	1A	35	22	30	7/8	1.1/8	
***	137S	***	25	35	1"	1.3/8	
***	1	40	30	38	1.1/8	1.1/2	
1 1/4"	1X	45	30	40	1.1/8	1.5/8	
***	45A	50	32	45	1.1/4	1.3/4	
1 1/2"	2A	***	38	50	1.1/2	1.7/8	
1 3/4"	2	60	42	55	1.3/4	2.1/8	
2"	2K	70	45	60	1.3/8	2.3/8	
2 1/2"	3	***	50	70	2"	2.3/4	
***	75A	80	55	75	2.1/4	3"	
2 3/4"	3K	90	60	80	2.3/8	3.1/8	
3"	4	100	70	90	2.3/4	3.1/2	
3 1/2"	4X	***	80	100	3.1/4	4"	
***	110A	***	90	110	3.1/2	4.3/8	
4"	5	***	95	115	3.3/4	4.5/8	
4 1/2"	5K	130	100	120	3.3/4	4.1/2	
***	6	140	110	130	4.3/8	5.1/4	
5"	140A	***	125	140	5	5.1/2	
***	575S	160	125	145	5"	5.3/4	
6"	6K	***	140	160	5.5/8	6.3/8	
7"	7"	***	180mm	6"	7"		
8"	8"	***	200mm	7"	8"		
9"	9"	***	220mm	8"	9"		
10"	10"	***	250mm	9"	10"		
11"	11"	***	280mm	10"	11"		
12"	12"	***	300mm	11"	12"		
13"	13"	***	330mm	12"	13"		
14"	14"	***	356mm	13"	14"		
15"	15"	***	375mm	14"	15"		
16"	16"	***	400mm	15"	16"		
18"	18"	***	450mm	17"	18"		

## MCB Channels

### Normal Type

#### Sizes :

75mm x 35mm x 1mm

15mm x 35mm x 1.5mm

G Type

Sizes

32mm x 15mm x 1.5mm

**Material :** Mild Steel etc

**Plating :** Zinc Yellow

Zinc Blue

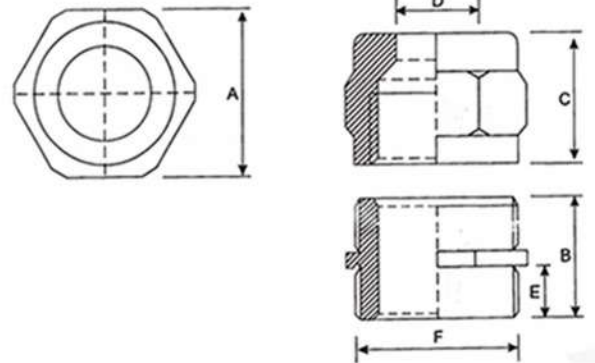
\* Available in 2 Meter also.

\* Aluminium Channel available.



# CABLE ACCESSORIES

## Metal Glands



## Anti Vibration pad

**Size :** 15mm x 50mm x 10 mtr roll  
 6mm x 50mm width x 25 mtr roll  
 10mm x 15mm width x 25 mtr roll

**Material :** EDPM  
 Other Sizes on Request



# CABLE ACCESSORIES

## Self Adhesive Tape



### Material :

**XLPE Foam**  
**EDPM Gasket**  
**Neopren Gasket**  
**Silicon Gasket**

Available single side adhesive and double side adhesives

Sizes : As per requirement

## Insulation Tape

- Applicable for covering electrical wire joints.
- Excellent for electrical wires. High performance strength and adhesion characteristics
- It has good elongation property, anti vibrating, strong crack resistance, high resistance to heat , water and moisture, high seal property.
- Excellent insulator of electricity, easy to use

g



# CABLE ACCESSORIES

## Grommets



**Material :** EPDM  
Round Grommets,

Available in EPDM, Nitrile, Silicon

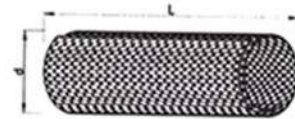
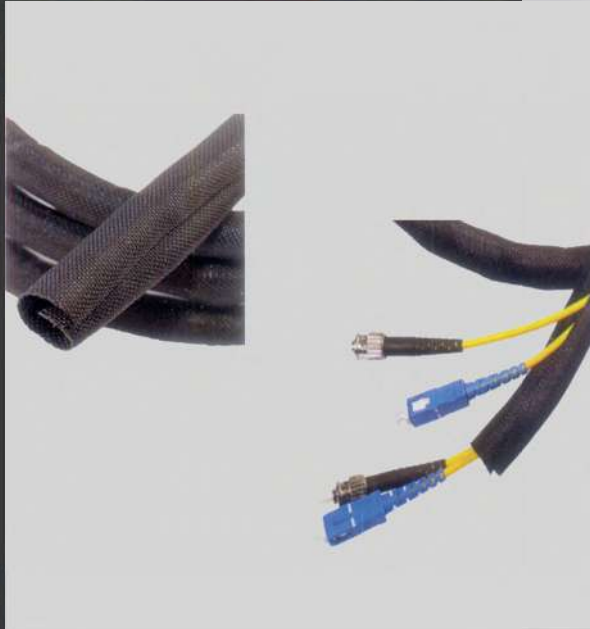
## Self Locking Cable Marker

Size (Sq.mm)	Wire	OD (MM)	Std. Qty. Pkg
0.4 / 0.5 Sq.mm.	0.4 / 05	1.0 to 1.5	100 PCS
0.65 Sq.mm.	0.65	1.8 to 2.2	100 PCS
1 Sq.mm.	1	2.2 to 3.0	100 PCS
1.5 Sq.mm.	1.5	3.2 to 3.8	100 PCS
2.5 Sq.mm.	2.5	3.5 to 4.2	100 PCS
4 Sq.mm.	4	4.5 to 5.2	100 PCS
10 Sq.mm.	10	5.5 to 6.8	100 PCS
16 Sq.mm.	16	6.5 to 8.0	100 PCS
25 Sq.mm.	25	8.0 to 9.5	100 PCS
35 Sq.mm.	35	9.5 to 12.0	100 PCS
50 Sq.mm.	50 (SIZE I)	12.5 to 14.0	100 PCS
70 Sq.mm.	70 (SIZE II)	14.0 to 16.5	100 PCS
95 Sq.mm.	95 (SIZE III)	16.5 to 20.0	100 PCS
120 / 150 Sq.mm.	120 / 150 (SIZE IV)	20.0 to 24.0	100 PCS



# CABLE ACCESSORIES

## Self Closing Wrap



Size (MM)	Width (MM)	SIZE (MM)
5	6	100 m
8	9	100 m
10	11	100 m
13	14	50 m
16	17	25 m
19	20	25 m
25	27	25 m
29	31	25 m
32	34	25 m
38	40	25 m
50	52	25 m

## Self Locking Cable Marker



Size (Sq.MM)	Wire	OD (MM)	Std. Qty/Pkg
0.4/0.5 SQ.MM	0.4 / 0.5	1.0 TO 1.5	100 PCS
0.65 SQ.MM	0.65	1.8 TO 2.2	100 PCS
1 SQ.MM	1	2.2 TO 3.0	100 PCS
1.5 SQ.MM	1.5	3.2 TO 3.8	100 PCS
2.5 SQ.MM	2.5	3.5 TO 4.2	100 PCS
4 SQ.MM	4	4.5 TO 5.2	100 PCS
10 SQ.MM	10	5.5 TO 6.8	100 PCS
26 SQ.MM	16	6.5 TO 8.0	100 PCS
25 SQ.MM	25	8.0 TO 9.5	100 PCS
35 SQ.MM	35	9.5 TO 12.0	100 PCS
50 SQ.MM	50 (SIZE I)	12.5 TO 14.0	100 PCS
70 SQ.MM	70 (SIZE II)	14.5 TO 16.5	100 PCS
95 SQ.MM	95 (SIZE III)	16.5 TO 20.0	100 PCS
120 / 150 SQ.MM	120 / 150 (SIZE IV)	20.0 TO 24.0	100 PCS



# CABLE ACCESSORIES

## Cable Marker



Wire	OD (MM)	Std. Qty/Pkg
SMALL 'T' UNIVERSAL	1.5 TO 4.0	100 PCS
BIG 'T' UNIVERSAL	2.5 TO 6.0	100 PCS

### Technical Data

Material	Soft PVC
Colour	Yellow body with Black Marking
Availability Marking	0 to 9 / A to Z / +, -, /, ., ±
Operating Temperature	-45° C to +70° C
Feature	To be applied before wire termination
Application	Wire Identification in Electrical / Electronic Wiring



## Cable Marker



Size (Sq.MM)	OD (MM)	Std. Qty/Pkg
0.65 SQ.MM	1.8 TO 2.4	100 PCS
1 SQ.MM	2.0 TO 2.8	100 PCS
1.5 SQ.MM	3.0 TO 3.8	100 PCS

### Technical Data

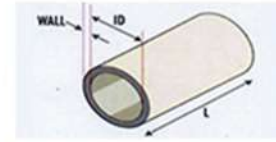
Material	Soft PVC
Colour	10 international colour (Coding)
Availability Marking	0 to 9 / A to Z / +, -, /, ., ±
Operating Temperature	-45° C to +70° C





# CABLE ACCESSORIES

## Ferrule Printing Sleeve



Inner Diameter (in mm)	Wall Thickness (in mm)	Standard Colours	Standard Packing
2.2	0.35	White	100 Mtr Roll
2.5	0.35	White	100 Mtr Roll
3	0.35	White	100 Mtr Roll
3.2	0.4	White	100 Mtr Roll
4	0.4	White	100 Mtr Roll
4.5	0.4	White	100 Mtr Roll
5	0.45	White	100 Mtr Roll
5.5	0.45	White	100 Mtr Roll
6	0.45	White	100 Mtr Roll
6.3	0.45	White	100 Mtr Roll
7	0.5	White	100 Mtr Roll
8	0.5	White	100 Mtr Roll